



# Hardee's

**\$1,408,000 | 6.25% CAP**

638 N Main St, Canton, IL 61520 (Peoria)

- ✓ **Rent Commencement:** August 2022
- ✓ **17+ Yrs. Left on Recently Extended 20-Year NNN Lease** with (4) 5-Year Options to Renew and 10% Rental Increases Every 5 Years
- ✓ **Excellent Site-Level Visibility** – Frontage Along Main Street (12,300+ VPD) the Primary North-South Thoroughfare Running Through Canton.
- ✓ **Strong Rent to Sales Ratio**
- ✓ **A Quarter Mile from the Subject Property is Canton High School**, the only high school in the city with enrollment of approximately 700 students, providing a solid customer base for the restaurant.

Hardee's is an **American restaurant chain**, which predominantly operates in the South and Midwest states. It has evolved through **several corporate ownerships** since its establishment in **1960**.



# INVESTMENT OVERVIEW

HARDEE'S CANTON, IL

Subject Property



## CONTACT FOR DETAILS

**Russell Smith**

Vice President  
(214) 915-8890

rsmith@securenetlease.com

**Bob Moorhead**

Managing Partner  
(214) 522-7210

bob@securenetlease.com

**IL Broker of Record: Matt Chambers**

**License #: 481.000413**

# \$1,408,000

## 6.25% CAP

NOI

\$88,000

Building Area

±3,250 SF

Land Area

±1.12 AC

Year Built/Remodeled

1970/2013

Lease Type

Net Lease

Occupancy

100%

- ✓ **Rent Commencement:** August 2022
- ✓ **20-Year Net Lease** with (4) 5-Year Options to Renew and 10% Rental Increases Every 5 Years. The store boasts a healthy rent to sales ratio of 8.23%.
- ✓ **Excellent Site-Level Visibility** - The subject property has frontage along Main Street (12,300+ VPD) the primary north-south thoroughfare running through the city of Canton.
- ✓ **TriStar Ventures Operates 26 Units Throughout IL and IN**, and generated approximately \$30,000,000 in revenue in 2023.
- ✓ **The Lease is Guaranteed by LBE Holdings**, which includes 64 units, and had totaling \$87,000,000 in 2023.
- ✓ **A Quarter Mile from the Subject Property is Canton High School**, the only high school in the city with enrollment of approximately 700 students, providing a solid customer base for the restaurant.
- ✓ **The Wider Peoria-Canton, IL Metro Area is at the center of a multi-county region along the Illinois River.** Agriculture giants Caterpillar and Komatsu are originally based out of this region, which have been credited for bringing billions in revenue to the area.
- ✓ **Hardee's operates over 1,800 restaurants across the U.S. and 13 other countries.** They are franchised by Tristar Ventures, LLC, which is affiliated with over 100 Hardee's restaurants, and is part of the CKE Restaurant system. The CKE Restaurant system has created a chain of 3,828 restaurants in 40 states and 10 countries, with a total revenue of over \$3.8 billion.

This information has been secured from sources we believe to be reliable but we make no representations or warranties, expressed or implied, as to the accuracy of the information. Buyer must verify the information and bears all risk for any inaccuracies.

**SECURE**  
NET LEASE

# TENANT OVERVIEW

HARDEE'S CANTON, IL

## Hardee's

**Lessee:** Tristar Ventures, LLC

**Guarantor:** LBE Holdings

REVENUE  
**\$920 M**

LOCATIONS  
**1,800+**



[hardees.com](http://hardees.com)

Hardee's Restaurants LLC is an American fast-food restaurant chain operated by CKE Restaurants Holdings, Inc. ("CKE") with locations primarily in the Southern and Midwestern United States. The company has evolved through several corporate ownerships since its establishment in 1960 in North Carolina.

For over **60 years**, Hardee's has brought communities together with quality, delicious food. With more than **1,800 restaurants** across the U.S., and locations in **13 countries**, they are committed to the **best tasting food** to better serve their guests--From Made From Scratch™ Biscuits and Hand-Breaded Chicken Tenders™.

The Operator is a collection of affiliated companies that operates and franchises over **110 Hardee's** and Carl's Jr. restaurants in **10 states**. They were founded in **2010** with just **40 restaurants** and through a series of acquisitions and organic growth have climbed their way to the **second largest franchisee** in the CKE Restaurants system.

File Photo



## IN THE NEWS

HARDEE'S CANTON, IL

## Carl's Jr., Hardee's Join the AI Drive-Thru Revolution

DANNY KLEIN, MAY 4, 2023 (QSR MAGAZINE)

**Dan Mosher has held no shortage of conversations with restaurant brands over the topic of voice AI technology in recent months. And the tenor suggested heightened interest, just as it has for some time.**

But like any disruption, you have early adopters, and then you have those who want to see **trials before buying** in. Mosher, who was promoted to president of Presto Automation in late **March**, has a feeling Thursday's news might help **convince** that latter group.

**Presto announced the expansion of a partnership with CKE Restaurants, the parent company of Carl's Jr. and Hardee's, to roll its AI-powered solution, Presto Voice, to automate voice ordering at CKE drive-thru locations nationwide.**

The deal, Mosher says, represents the **largest quick-service chain** to adopt voice AI thus far. Presto currently works with Checkers & Rally's and Del Taco. CKE directs roughly **2,800 stores** across **44 states**.

Presto piloted the tech with CKE going back to the middle of 2022. It went live at a North Dakota franchise store and then a corporate one in Spring Hill, Tennessee, a city roughly **30 miles** south of Nashville.

One of the lead results concerned upselling. On average, test drive-thrus achieved an **88 percent** upsell offer rate to guests. Additionally, over **46 percent** of the upsells offered were accepted by guests, which lifted average checks.

"Presto's Voice AI **solution is a robust** choice as it aligns well with CKE's objective of providing guests with outstanding service while simultaneously increasing operational efficiency," Phil Crawford, CKE's chief technology officer, said. "... the pilot program yielded **positive outcomes**, with deployed stores experiencing a significant rise in revenue due to the upsell capability.

EXPLORE ARTICLE



## How Carl's Jr. and Hardee's Keep their Supply Chain Running Smoothly

MAY 16, 2023 (QSR MAGAZINE)

**CKE Restaurants, parent company of Carl's Jr. and Hardee's, operates over 2,700 domestic restaurants across 44 states.**

With such a large footprint, managing relationships with multiple suppliers across **15 different distribution centers** to ensure ingredients are delivered to each distribution center, and eventually to each location, can be a **massively complex** task.

**Carl's Jr. and Hardee's have not been immune from these supply-chain snarls. However, the brands have had the support needed to address them, says Todd Huetinck, senior vice president of supply chain management at CKE Restaurants, thanks to ArrowStream, a cloud-based foodservice supply chain management platform that CKE Restaurants has relied on for the past 10 years.**

That's especially true when considering the supply-chain disruptions that have become the norm since the onset of the pandemic. Recent data from the National Restaurant Association shows that **96 percent of operators** experienced delays or shortages of key food and beverage items during the **second half of 2022**.

"ArrowStream is a really user-friendly solution," Huetinck says. "It's a one-stop shop for our purchasing, distribution, and quality-control metrics. ArrowStream has become a **necessary tool** in order to manage our supply chain."

ArrowStream taps into data from key cogs in the supply chain, from suppliers, to **distribution centers**, to the store level, giving operators visibility across all spectrums.

EXPLORE ARTICLE



# LEASE OVERVIEW

**HARDEE'S** CANTON, IL

Initial Lease Term	20 Years, Plus (4), 5-Year Options to Renew
Rent Commencement	August 2022
Lease Expiration	August 2042
Lease Type	NNN
Rent Increases	10% Every 5 Years
Annual Rent YRS 1-5	\$88,000.00
Annual Rent YRS 6-10	\$96,800.00
Annual Rent YRS 11-15	\$106,480.00
Option 1	\$117,128.00
Option 2	\$128,840.80
Option 3	\$141,724.88
Option 4	\$155,897.37

This information has been secured from sources we believe to be reliable but we make no representations or warranties, expressed or implied, as to the accuracy of the information. Buyer must verify the information and bears all risk for any inaccuracies.





ILLINOIS 78

CANTON HIGH SCHOOL (658 STUDENTS)

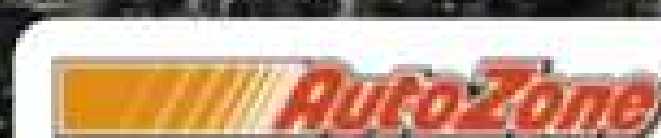
MEMORIAL STADIUM

CANTON ATHLETIC PARK

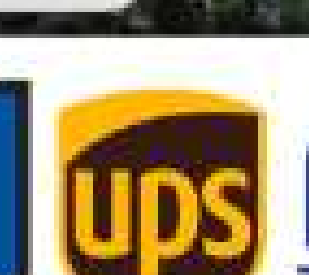
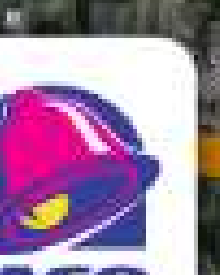
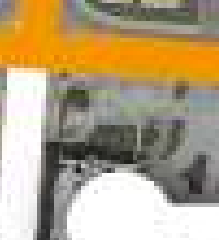


N MAIN STREET +12,300 VPD

**Hardee's**  
**SUBJECT PROPERTY**  
 638 N. MAIN ST.



ILLINOIS 9



ILLINOIS 78

ILLINOIS 9

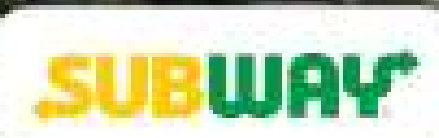


ILLINOIS STATE ROUTE 9 +12,484 VPD



CANTON PLACE APARTMENTS

OAK LAWN APARTMENTS



EASTVIEW ELEMENTARY SCHOOL (273 STUDENTS)

VILLAGE SQUARE APARTMENTS

INGERSOLL MIDDLE SCHOOL (674 STUDENTS)



EAST ELM APARTMENTS (36 UNITS)



GRAHAM HEALTH SYSTEM (81 BEDS)

WESTVIEW ELEMENTARY SCHOOL (2,219 STUDENTS)

WALLACE PARK

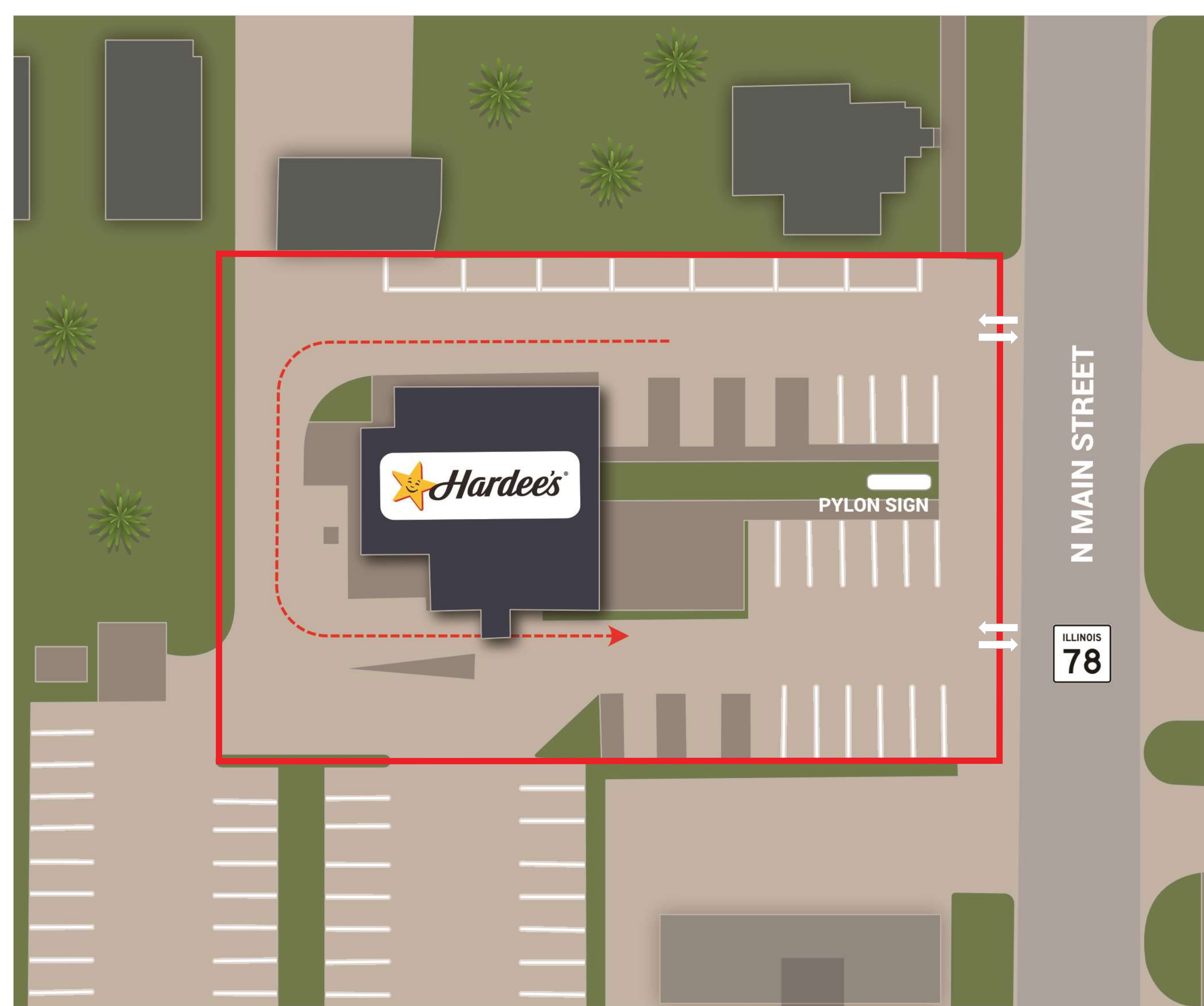
# SITE OVERVIEW

HARDEE'S CANTON, IL

Yr Built/Remodeled | 1970/2013

Building Area | ±3,149 SF

Land Area | ±1.10 AC



## NEIGHBORING RETAILERS

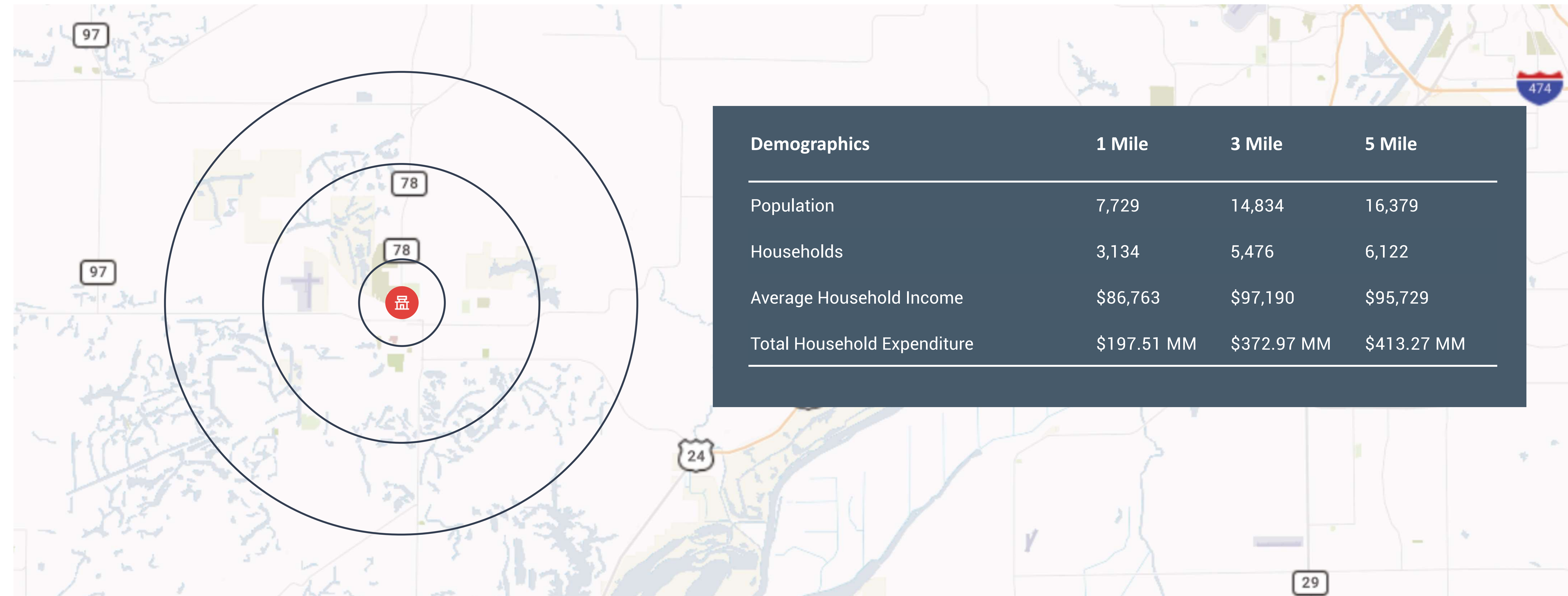
- Kroger
- Hy-Vee
- Aldi
- Walgreens
- CVS
- O'Reilly Auto Parts
- Goodwill
- Dollar General
- Dollar Tree
- Casey's





# LOCATION OVERVIEW

HARDEE'S CANTON, IL



Demographics	1 Mile	3 Mile	5 Mile
Population	7,729	14,834	16,379
Households	3,134	5,476	6,122
Average Household Income	\$86,763	\$97,190	\$95,729
Total Household Expenditure	\$197.51 MM	\$372.97 MM	\$413.27 MM

## ECONOMIC DRIVERS (NUMBER OF EMPLOYEES)

1. OSF Saint Francis Medical Center (13,500)
2. Caterpillar Inc. (12,000)
3. Unity Point Health (4,991)
4. Peoria Public Schools (2,668)
5. Bradley University (1,300)
6. Advanced Technology Services (1,073)
7. SC2 Services (1,030)
8. Liberty Steel & Wire (912)
9. City of Peoria (888)
10. CEFCU (867)
11. Komatsu American Corp (850)
12. County of Peoria (783)

# LOCATION OVERVIEW

HARDEE'S CANTON, IL

## Canton

Illinois

 13,242+  
Population

 \$52,749  
Median Household Income



Canton is Home to the #1  
Ranked Community College  
in Illinois

#1

Peoria is Consistently  
Being Ranked on the  
BestPlaces Rankings in the  
U.S.

DESIRABLE TO LIVE

### Canton is the largest city in Fulton County, Illinois, United States.

The Canton Micropolitan Statistical Area covers all of Fulton County, it is in turn, part of the wider Peoria-Canton, IL Combined Statistical Area (CSA). It lies in the Illinois River valley between the Illinois and Spoon rivers. Canton has close proximity to the Peoria metro area.

**Peoria, Illinois is the oldest community in Illinois with a population of 113,672+.**

There is over 1,400 acres of open public parks, access to a great educational system from kindergarten to community college, a free privately funded public library and a state-of-the-art hospital and clinic providing first class healthcare.

Canton mixes the cool ambiance of a historic downtown with a one-of-a-kind city park situated at its center. There's ample opportunities for employment with over 300 businesses. The town's employers now include the Illinois state prison named the Illinois River Correctional Center, the city's Graham Hospital. Cook Medical, Spoon River College and retail stores. Peoria is the largest city on the Illinois River, giving its downtown picturesque views that only a riverfront can provide. The Peoria RiverFront district is one of the state's oldest urban areas, and is home to great restaurants, live entertainment, cultural centers and more. The passing by of barges and pleasure boats, like the paddlewheel boat The Spirit of Peoria, adds to the ambiance. Peoria has become famous as a representation of the average American city because of its demographics and its perceived mainstream Midwestern culture.

## IN THE NEWS

HARDEE'S CANTON, IL

## Peoria City Council gets a '30,000-foot high' overview of new riverfront development plan

TIM SHELLEY, JULY 26, 2023 (WCBU)

After more than five years in the works, the Peoria City Council saw plans Tuesday for a redesigned downtown riverfront. Among other things, the plans call for a dog park, an interactive water feature, and a kayak launch along the Illinois River between the Bob Michel and Murray Baker bridges.

The plan also calls for **18.5 acres** of green space, four miles of walking and running paths, and more than **900 new trees**. But the **cost** is still a big question mark.

The city has secured a \$15 million grant from the Illinois Department of Commerce and Economic Opportunity and a \$300,000 flooding prevention grant from the Federal Emergency Management Agency. Total flood prevention efforts are likely to cost upwards of \$3 million, however. Ghareeb said it may be possible to secure more FEMA money.

"We don't have an actual construction costs. So, the cost average is right now between **\$15 to \$25 million**," said George Ghareeb, senior vice president at design firm Terra Engineering. "So it's a big range. And part of the reason is, we are at **30,000 feet high**. When we come closer, we could tweak the design a little bit more whether depending on how much money we have."

Second District councilman Chuck Grayeb, whose district includes the downtown area, said the uncertainty around **costs** gives him "indigestion."

"We should not be at **30,000 feet** anymore, folks. We just shouldn't," he said. "We should be ready to land the plane."

In the plans, a flood wall would cover most of the area around the River Station. Pumps would also be used to keep out floodwaters, and a **wave attenuator** on the north side of the riverfront park area would calm the waters near the shoreline.

EXPLORE ARTICLE



## 'The flowers are blooming': Peoria Mayor Rita Ali says the city is well-positioned for growth in annual address

TIM SHELLEY, JUNE 23, 2023 (WCBU)

The city of Peoria's financial position is unusually strong in the aftermath of the COVID-19 pandemic. It's a wave Peoria Mayor Rita Ali wants the city to ride to further growth.

That was the general theme of the mayor's annual State of the City address Thursday at Luthy Botanical Gardens. The city's revised **2023 budget** was **\$265 million**. Ali said overall city revenues were **\$282 million** in 2022, up **12%** from 2021. Fifty-two percent of revenues come from local taxes, fees, and fines. The bulk of the rest is from state and federal sources.

Ali said the city exceeded revenue projections over the past two years. The city general revenue fund is at about 50% of operating expenses, double the 25% minimum set by policy.

"It means that the budget surplus from **2022** can be used beginning **2024** to pay more toward **public safety pensions** and still exceed the fund balance policy," Ali said. "It means that the city has several years of fiscal certainty and a buffer in the event of economic turndown or recession."

It's a far different **budgetary situation** than the city faced at the beginning of the COVID-19 pandemic, when lost revenues forced difficult cuts to the table.

"American (Rescue) Plan Act or ARPA funding has had a huge positive impact on our budget," Ali said. "We will continue to utilize these **funds through 2024** and make up for the end of these funds by tapping other grant and funding sources."

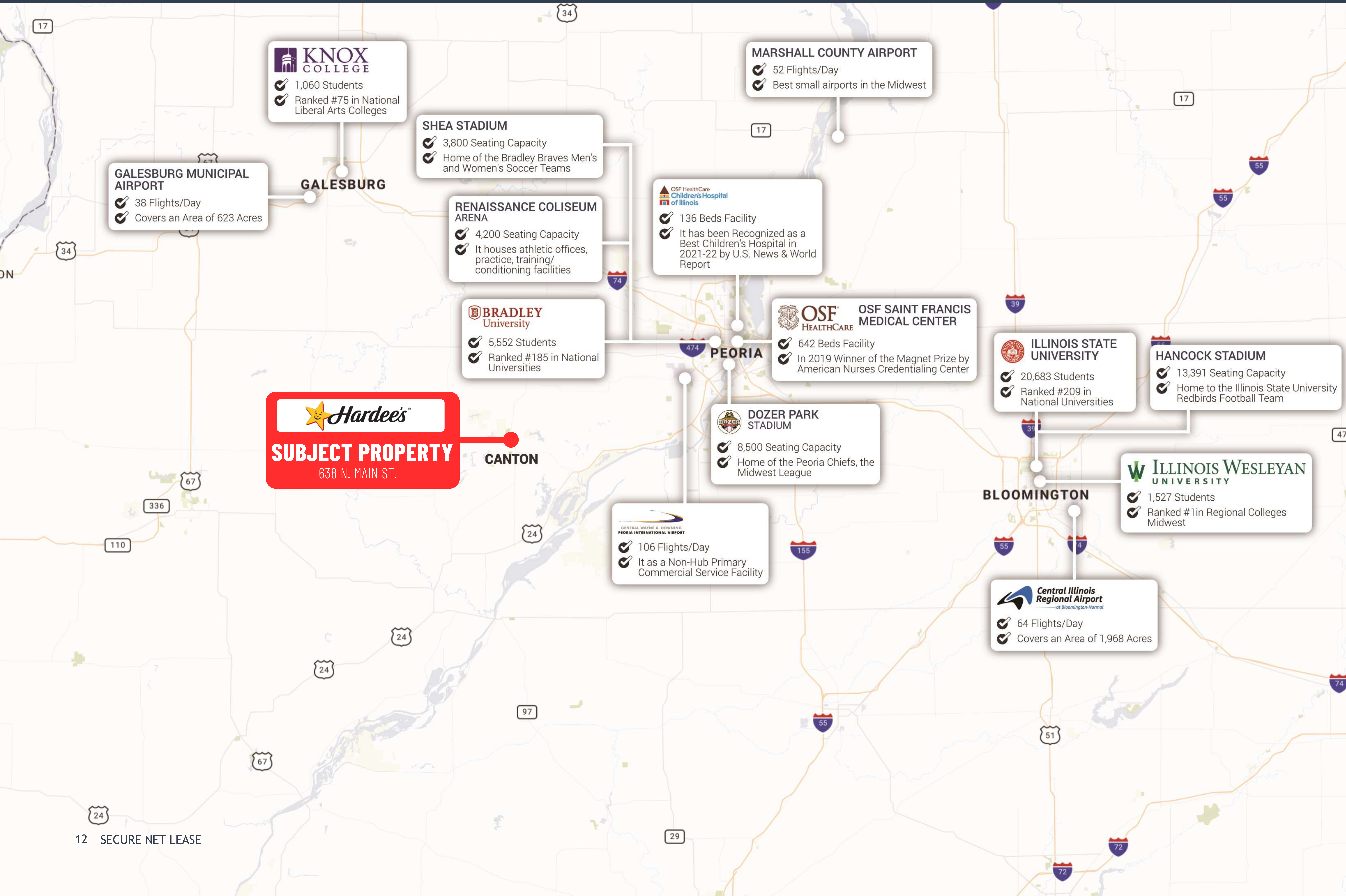
Peoria received **\$46 million** in federal relief dollars.

EXPLORE ARTICLE



# METRO STATISTICS

## HARDEE'S CANTON, IL



**KNOX COLLEGE**

- ✓ 1,060 Students
- ✓ Ranked #75 in National Liberal Arts Colleges

**MARSHALL COUNTY AIRPORT**

- ✓ 52 Flights/Day
- ✓ Best small airports in the Midwest

**GALESBURG MUNICIPAL AIRPORT**

- ✓ 38 Flights/Day
- ✓ Covers an Area of 623 Acres

**SHEA STADIUM**

- ✓ 3,800 Seating Capacity
- ✓ Home of the Bradley Braves Men's and Women's Soccer Teams

**RENAISSANCE COLISEUM ARENA**

- ✓ 4,200 Seating Capacity
- ✓ It houses athletic offices, practice, training/conditioning facilities

**OSF HealthCare Children's Hospital of Illinois**

- ✓ 136 Beds Facility
- ✓ It has been Recognized as a Best Children's Hospital in 2021-22 by U.S. News & World Report

**BRADLEY University**

- ✓ 5,552 Students
- ✓ Ranked #185 in National Universities

**OSF HEALTHCARE OSF SAINT FRANCIS MEDICAL CENTER**

- ✓ 642 Beds Facility
- ✓ In 2019 Winner of the Magnet Prize by American Nurses Credentialing Center

**Hardee's**

**SUBJECT PROPERTY**  
638 N. MAIN ST.

**ILLINOIS STATE UNIVERSITY**

- ✓ 20,683 Students
- ✓ Ranked #209 in National Universities

**HANCOCK STADIUM**

- ✓ 13,391 Seating Capacity
- ✓ Home to the Illinois State University Redbirds Football Team

**DOZER PARK STADIUM**

- ✓ 8,500 Seating Capacity
- ✓ Home of the Peoria Chiefs, the Midwest League

**ILLINOIS WESLEYAN UNIVERSITY**

- ✓ 1,527 Students
- ✓ Ranked #1 in Regional Colleges Midwest

**GENERAL WAYNE A. DOWNING PEORIA INTERNATIONAL AIRPORT**

- ✓ 106 Flights/Day
- ✓ It as a Non-Hub Primary Commercial Service Facility

**Central Illinois Regional Airport**  
at Bloomington-Normal

- ✓ 64 Flights/Day
- ✓ Covers an Area of 1,968 Acres

CALL FOR ADDITIONAL INFORMATION

## Dallas

**Office**

10000 N Central Expressway  
Suite 200  
Dallas, TX 75231  
(214) 522-7200

## Los Angeles

**Office**

123 Nevada Street  
El Segundo, CA 90245  
(424) 320-2321

---

CALL FOR ADDITIONAL INFORMATION

**Russell Smith**

Vice President  
(214) 915-8890

[rsmith@securenetlease.com](mailto:rsmith@securenetlease.com)

**Bob Moorhead**

Managing Partner  
(214) 522-7210

[bob@securenetlease.com](mailto:bob@securenetlease.com)